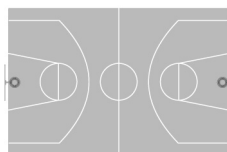




**WELCOME  
TO  
IN-POSITION  
BASKETBALL  
OFFICIATING  
CAMP  
2007**

**IN-POSITION  
BASKETBALL OFFICIATING CAMP  
P.O. BOX 140  
WAYNE, PA 19087**



**IN-POSITION  
BASKETBALL  
OFFICIATING CAMP**



on  
**“Hawk Hill”  
St. Joseph’s University**

in conjunction with  
**Phil Martelli’s  
Team Basketball Camp**

**August 3<sup>rd</sup> – August 5<sup>th</sup>  
2007**

The 2007 **In-Position Basketball Officiating Camp** will be conducted August 3rd – August 5th on the campus of St. Joseph's University. The camp will be held in conjunction with Phil Martelli's Team Basketball Camp. All basketball officials, both male and female, who are interested in becoming better officials, are invited to attend. Enrollment will be limited to the first 60 officials to submit their paid deposit.

**PURPOSE**

**In-Position Basketball Officiating Camp** is designed to provide a more efficient system for the advancement of aspiring basketball officials. This camp provides a great opportunity for officials to advance from the J.V. to varsity level with the high school assignors. Several of our past campers have been hired at the Division II college level. The camp is designed to help officials reach their goals.

**FORMAT**

The weekend format should allow you to minimize any absence from work. Camp will begin at 5 p.m. on Friday and will end Sunday at 2 p.m. Your camp schedule may be changed if you will be a late arrival or if you have to depart early.

**BEGINNING OFFICIAL**

An opportunity to improve mechanics and gain experience from assignors and officials. An outstanding 6:1 official to mentor ratio will be observed. This will give you a great deal of individual attention.

**VETERAN OFFICIAL**

For those looking to make advancements in officiating, this camp may be what you are seeking. Several of our prior campers have advanced to the varsity high school level, as well as the junior college and collegiate levels.

**COST**

The cost of the camp will be \$135. Returning campers — \$100.

**GAMES**

All games will be played indoors using National Federation rules. Outstanding team competition will allow for closely contested games. A select number of games will be videotaped to enable camper's detailed review.

**CLASSROOM INSTRUCTION**

Classroom instruction will be used to discuss game situations along with rules interpretations. Also, veteran collegiate officials will discuss how they have progressed through the officiating ranks, working their way to the collegiate level.



**STAFF**

**-HIGH SCHOOL ASSIGNORS-**

- Jeff Anderson** Del Val and Southern Chester County Assignor
- Tom Brady** District 1 Representative, PAC 10 Assignor
- Don Ciminera** Women's MAAC, America East, Ivy League Official, Girls Catholic League Assignor
- Bob Donato** Atlantic 10, ACC, Big East, SEC, Patriot, Ivy League Official, Boys Central League Assignor, NCAA Final Four Official
- James Smith** Philadelphia Charter Schools Assignor
- Bill Stephens** Boys/Girls Del Val, Girls Central League Assignor
- Walter Yost** Patriot, Ivy, PAC League Observer, Boys/Girls Suburban One and Bicentennial League Assignor

**-COLLEGE ASSIGNORS-**

- Owen Hannah** Mens/Womens Pennsylvania State Athletic Conference Assignor (Division II)

**-STAFF-**

- Tom Blackwell** Women's NCAA Division III Final Four Official 2003
- Jeff Clark** ACC, A-10, Big East, Ivy, Patriot League Official
- Brian Dorsey** ACC, Colonial, NEC, MAAC Official, A-10, Horizon
- Greg Durrah** Colonial, Ivy, Patriot League, MEAC Official
- John Gaffney** Big East, Ivy, Patriot League, A-10, MAAC Official
- Tim Kelly** ACC, Big South, Colonial, Ivy, Patriot League Official
- Mike Kitts** ACC, Atlantic 10, Big East, Ivy, MAAC Patriot League Official, NCAA Finals Official 1996, NCCA Final Four 2002

**-NBA Official-**

- To be announced** Prior speakers: Steve Javie, Mark Wunderlich, Duke Callahan, Zack Zarba, Ed Malloy

**CAMP APPLICATION**

**PLEASE NOTE:**

We do not provide health and accident insurance. Also, you are required to sign a complete physical exam waiver before you can attend the camp. A separate form will be sent to you at a later date. **Remember, camp space is limited... Camp has been sold out three years in a row!**

Full Name: \_\_\_\_\_

Mailing Address: \_\_\_\_\_

Home Phone: \_\_\_\_\_

Work Phone: \_\_\_\_\_

Age: \_\_\_\_\_ Height: \_\_\_\_\_ Wt: \_\_\_\_\_

Size: Shirt: \_\_\_\_\_ Shorts: \_\_\_\_\_

E-Mail: \_\_\_\_\_

Would like to work 3-man \_\_\_\_\_

Medical Insurance Carrier: \_\_\_\_\_

Group #: \_\_\_\_\_

\*\*\* Remember — \$100 for returning campers \*\*\*

**Total Cost \$135**

Enclosed is a check for my \$100 non-refundable deposit.

Enclosed is a check for my full payment.



Make checks payable to:  
**IN-POSITION OFFICIATING CAMP**  
 P.O. Box 140  
 Wayne, PA 19087  
 610-353-1684  
 Contact—Tim Kelly  
 tkelly@officialkellybenefits.com